

Features & Benefits

Inline Awning

1. *Framing*

The Crestlite® Internal Offset Framing offers a commercial look for apartments, high end residential, or where ever a commercial frame is required. This robust frame allows for large fixed lite applications for greater viewing area. Overall frame width is 25mm x 102mm

Crestlite® Internal Offset Framing has been designed to have any of the Trend® or Quantum® window ranges of product inserted into the frame in either single or double glazed configurations.

2. *Glazing*

The Crestlite® Internal Offset Framing has a number of glazing options for energy efficiency and acoustic requirements. Glazing is available in 5mm toughened glass through to 25mm double glazed units. Large single lite windows are available.

3. *Energy Efficiency Options*

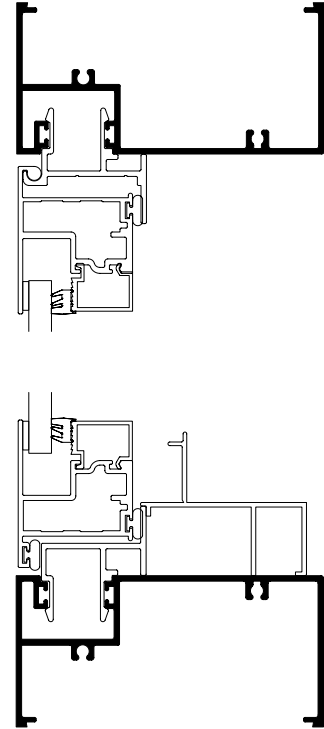
Trend® Thermashield® in various glazing styles are available to help reduce energy consumption. Trend® Thermashield® means greater control, bigger savings and most importantly one less thing to worry about.

4. *Acoustic options*

SoundMizer® acoustic solutions can range in various STC ratings. SoundMizer® acoustic solutions can reduce aircraft, highway traffic, railway and other annoying noise problems. For information or technical details contact Trend®.

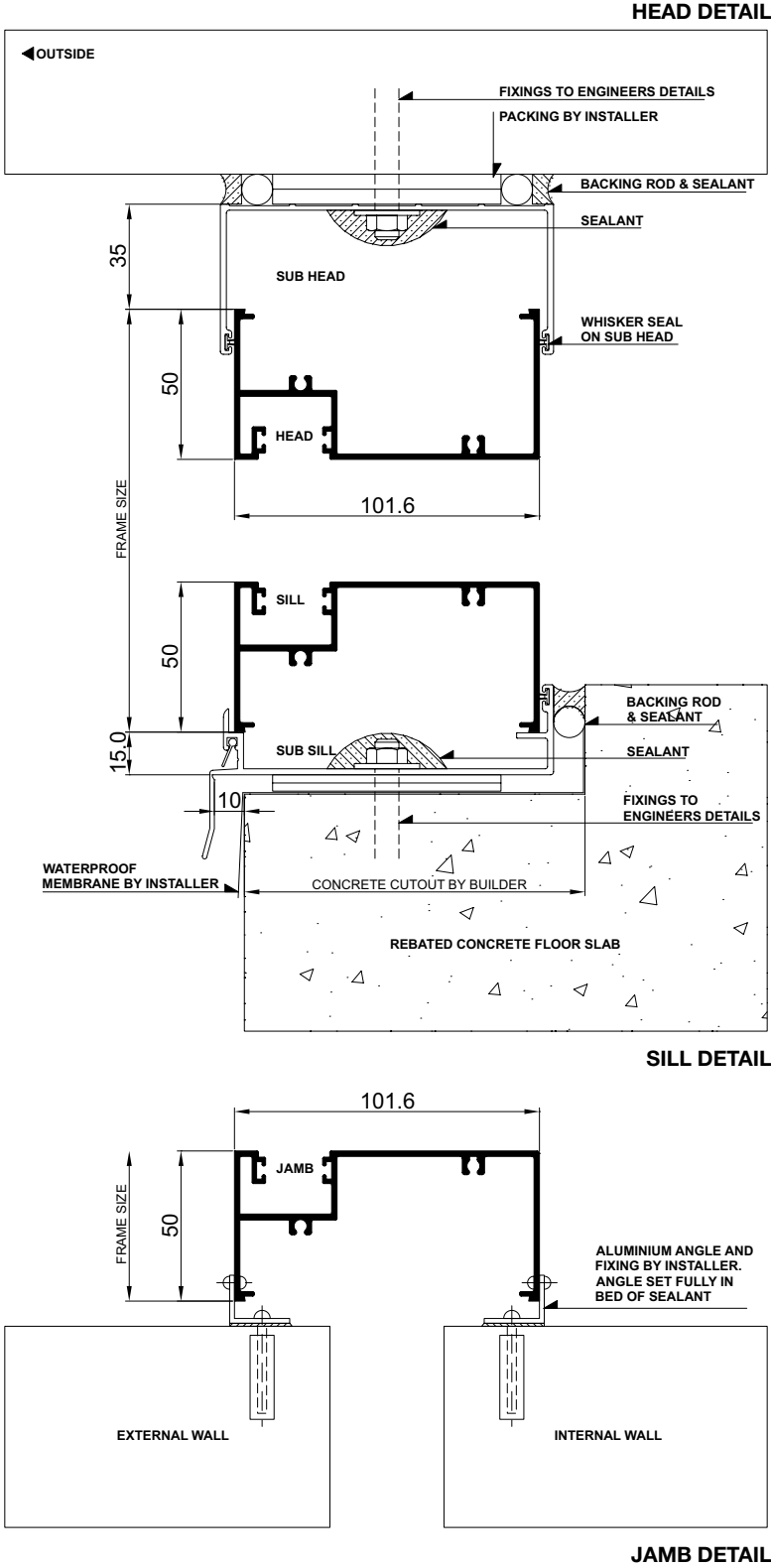
5. *Finishes*

Powdercoated finishes are available in a range of colours and finishes including Warranty Powders and Anodised options to suit most commercial applications.



Installation

Inline Awning | Building In Details | **Generic Detail**

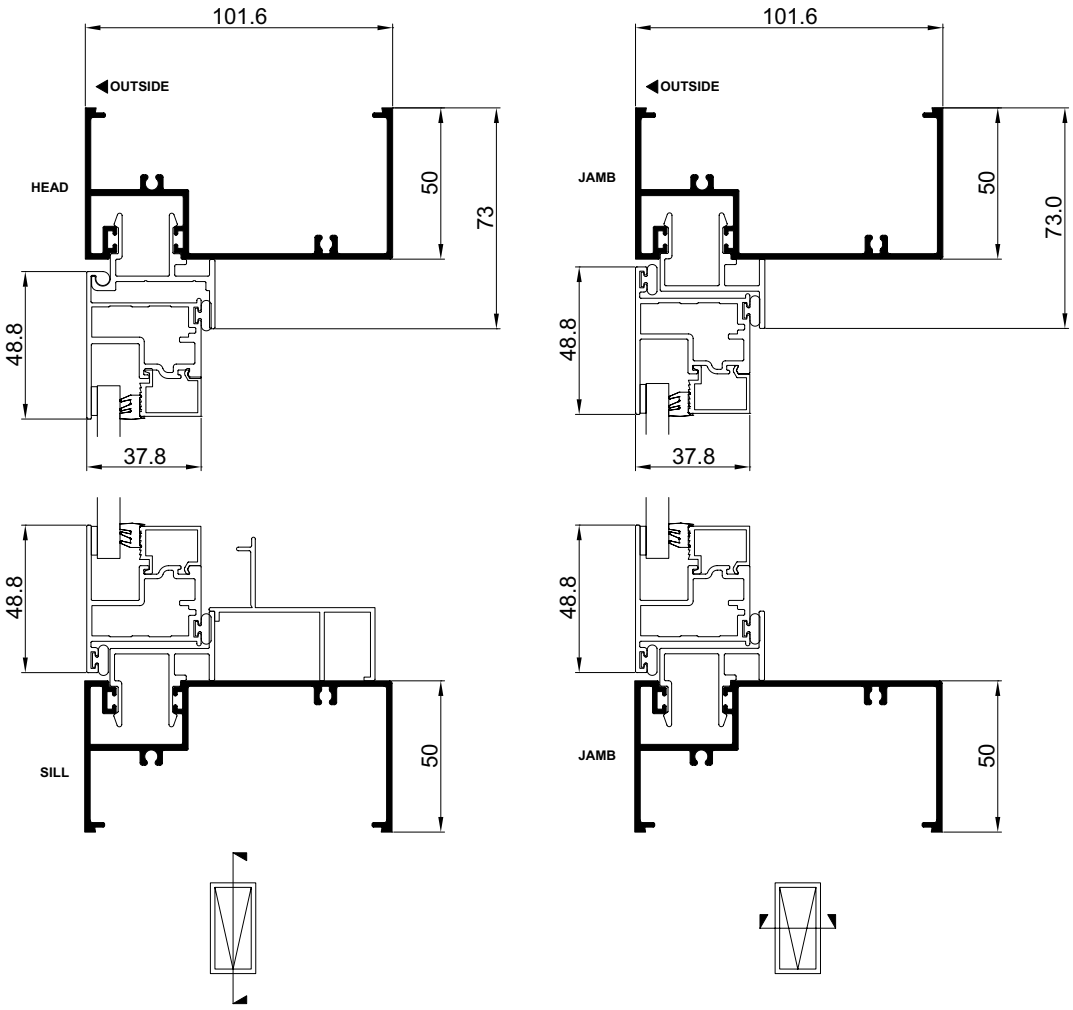


Please note that drawings are not to scale
Inline Awning | Code | Mk-4 | 1 Jul 2009

Confidentiality Notice: This document and the information it contains are copyright and confidential to Trend® Windows & Doors Pty Limited. Disclosure, use and copying in any form whatsoever, except as authorised by Trend® Windows & Doors in writing, are strictly prohibited. Patents and Design Registrations pending.

Cross Sectional Views

Inline Awning | **Single Lite**

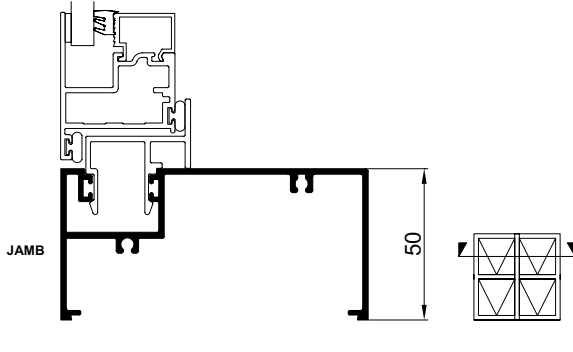
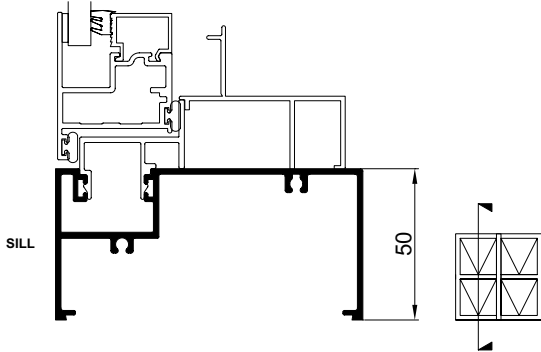
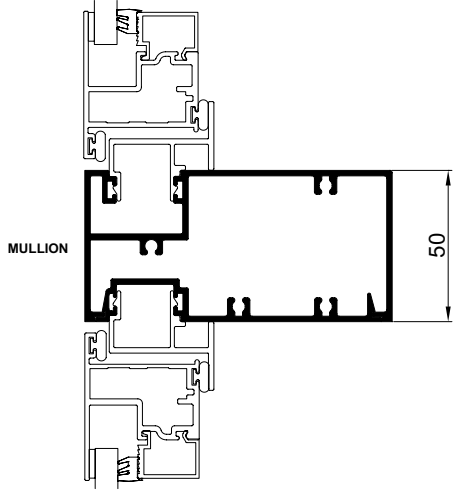
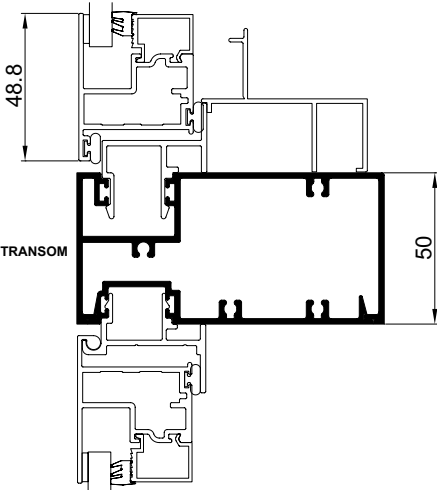
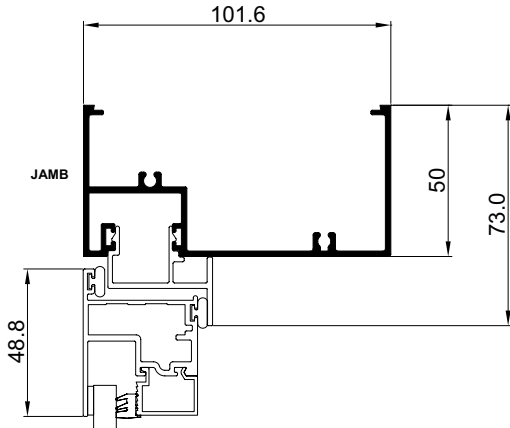
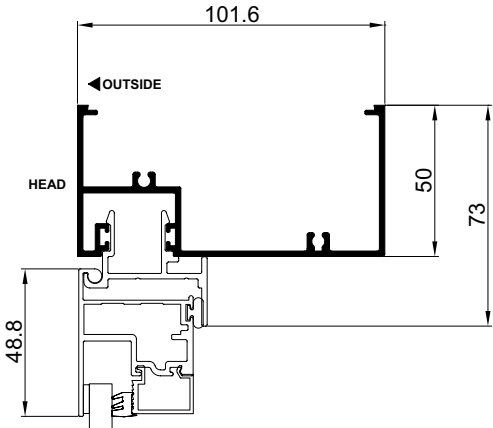


Please note that drawings are not to scale
Inline Awning | Code | Mk-4 | 1 Jul 2009

Confidentiality Notice: This document and the information it contains are copyright and confidential to Trend® Windows & Doors Pty Limited. Disclosure, use and copying in any form whatsoever, except as authorised by Trend® Windows & Doors in writing, are strictly prohibited. Patents and Design Registrations pending.

Cross Sectional Views

Inline Awning | **Two Lite with Lowlite**



Please note that drawings are not to scale
Inline Awning | Code | Mk-4 | 1 Jul 2009

Confidentiality Notice: This document and the information it contains are copyright and confidential to Trend® Windows & Doors Pty Limited. Disclosure, use and copying in any form whatsoever, except as authorised by Trend® Windows & Doors in writing, are strictly prohibited. Patents and Design Registrations pending.