

Xtreme[®] Aluminium

Awning Windows

TECHNICAL DATA

Features & Benefits

Size Range

Ordering Details

Installation

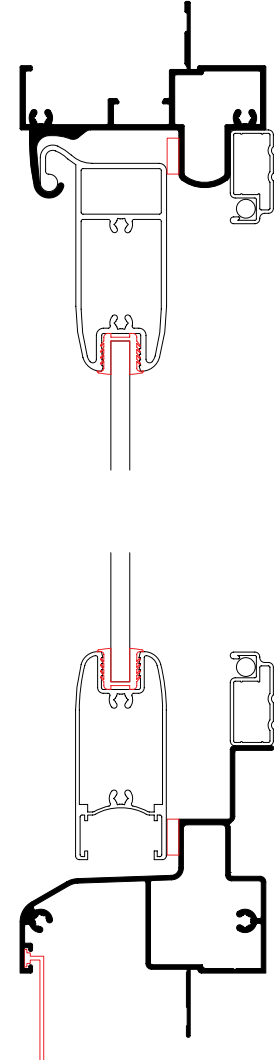
Cross Sectional Views

Features & Benefits

Xtreme® Awning Windows

- 1 **Bushfire Features**
Xtreme® Bushfire Windows & Doors have been tested to withstand temperatures up to 40kWm² without failure from either the glazing or from the window system itself, to help prevent internal ignition of houses and loss of precious possessions.
- 2 **Xtreme® Bushfire Windows & Doors System**
Features include patented Van Door® and Pyro-Protec™ Sealing Systems acting to protect the home against wind, water, noise dust and bushfire penetration. Trend® has combined the technologically advanced Quantum XP® Windows system with Pyro-Protec™ seals, glazing systems and 5mm standard toughened glass to produce Xtreme® Windows and Doors.
- 3 **Energy Efficiency Options**
Trend® Thermashield® in various glazing styles are available to help reduce energy consumption. Trend® Thermashield® means greater control, bigger savings and most importantly one less thing to worry about. Energy efficient options to u-value of 4.4 and SHGC 0.42 are available for Xtreme® Awning window.
- 4 **Acoustic options**
SoundMizer® acoustic solutions in various STC ratings, are available to STC 31 for Xtreme® Bushfire Awning window. SoundMizer® acoustic solutions can reduce aircraft, highway traffic, railway and other annoying noise problems. For information or technical details contact Trend®.
- 5 **Key Lock Chain Winder**
Xtreme® Windows winder mechanism is designed specifically for high performance, security and reliability. The Xtreme® winder can be used in even the harshest environment. The robust mechanisms are mounted securely to the window with a concealed 4 point fixing. Keyed lock is standard for added security.
- 6 **Continuous Hinge Hood**
The sash is protected from the weather by a continuous hinge hood that supports the sash and keeps the rain where it belongs - on the outside.

- 7 **Glazing**
Xtreme® Premium Awning sash frames have 5mm toughened glass as standard and is available in toughened 16mm double glazing for energy efficiency applications.
- 8 **Frames**
Xtreme® Bushfire Windows & Doors Premium frame is 65mm with the window sash 55mm wide. Xtreme® has a truly solid look, reminiscent of timber, and is extremely popular in both traditional and contemporary house designs.
- 9 **Window Placement**
Care should be taken with locating opening awning windows in pedestrian traffic areas.
- 10 **Protective Wrapping**
Protective wrapping for delivery to site is a standard for all Xtreme® products.
- 11 **Options**
Easy to fit flyscreens can be fitted and removed from the inside. Wide range of powdercoat finishes available including timber powdercoat finishes.



Please note that drawings are not to scale

Xtreme® Awning Windows | QPA-E | Mk-4 | 1 Jul 2009

Confidentiality Notice: This document and the information it contains are copyright and confidential to Trend® Windows & Doors Pty Limited. Disclosure, use and copying in any form whatsoever, except as authorised by Trend® Windows & Doors in writing, are strictly prohibited. Patents and Design Registrations pending.

Size Range

Xtreme® Awning Windows

STUD OPENING WINDOW		666	906	966	1146	1256	1626	1856	2226	2456	2706
		610	850	910	1090	1200	1570	1800	2170	2400	2650
656	600										
		QPA0606E	QPA0608E	QPA0609E	QPA0611E	QPA0612E	QPAF0616E	QPAF0618E	QPAF0622E	QPAFA0624E	QPAFA0627E
996	940										
		QPA0906E	QPA0908E	QPA0909E	QPA0911E	QPA0912E	QPAF0916E	QPAF0918E	QPAF0922E	QPAFA0924E	QPAFA0927E
1086	1030										
		QPA1006E	QPA1008E	QPA1009E	QPA1011E	QPA1012E	QPAF1016E	QPAF1018E	QPAF1022E	QPAFA1024E	QPAFA1027E
1256	1200										
		QPA1206E	QPA1208E	QPA1209E	QPA1211E	QPA1212E	QPAF1216E	QPAF1218E	QPAF1222E	QPAFA1224E	QPAFA1227E
1426	1370										
		QPA1406E	QPA1408E	QPA1409E	QPA1411E	QPA1412E	QPAF1416E	QPAF1418E	QPAF1422E	QPAFA1424E	QPAFA1427E
1856	1800										
		QPA1806TE	QPA1808TE	QPA1809TE	QPA1811TE	QPA1812TE	QPAF1816TE	QPAF1818TE	QPAF1822TE	QPAFA1824TE	QPAFA1827TE
2091	2035										
		QPA2106TE	QPA2108TE	QPA2109TE	QPA2111TE	QPA2112TE	QPAF2116TE	QPAF2118TE	QPAF2122TE	QPAFA2124TE	QPAFA2127TE

All windows and doors are designed to 700pa velocity and 150pa water rating. For higher ratings consult Xtreme® Windows & Doors

Please note that drawings are not to scale

Xtreme® Awning Windows | QPA-E | Mk-4 | 1 Jul 2009

Confidentiality Notice: This document and the information it contains are copyright and confidential to Trend® Windows & Doors Pty Limited. Disclosure, use and copying in any form whatsoever, except as authorised by Trend® Windows & Doors in writing, are strictly prohibited. Patents and Design Registrations pending.

Ordering Details

Xtreme[®] Awning Windows

All windows are illustrated as viewed from outside. Codes shown are for plain windows.

Manufactured from 65mm aluminium extrusion.

The first two numbers of code indicate approximate height, the last two numbers indicate approximate width.

Sash Style Options:

E indicates standard Xtreme Sash, eg window code QPA0906E

Configuration Options:

A indicates Awning

AF indicates Awning/Fixed

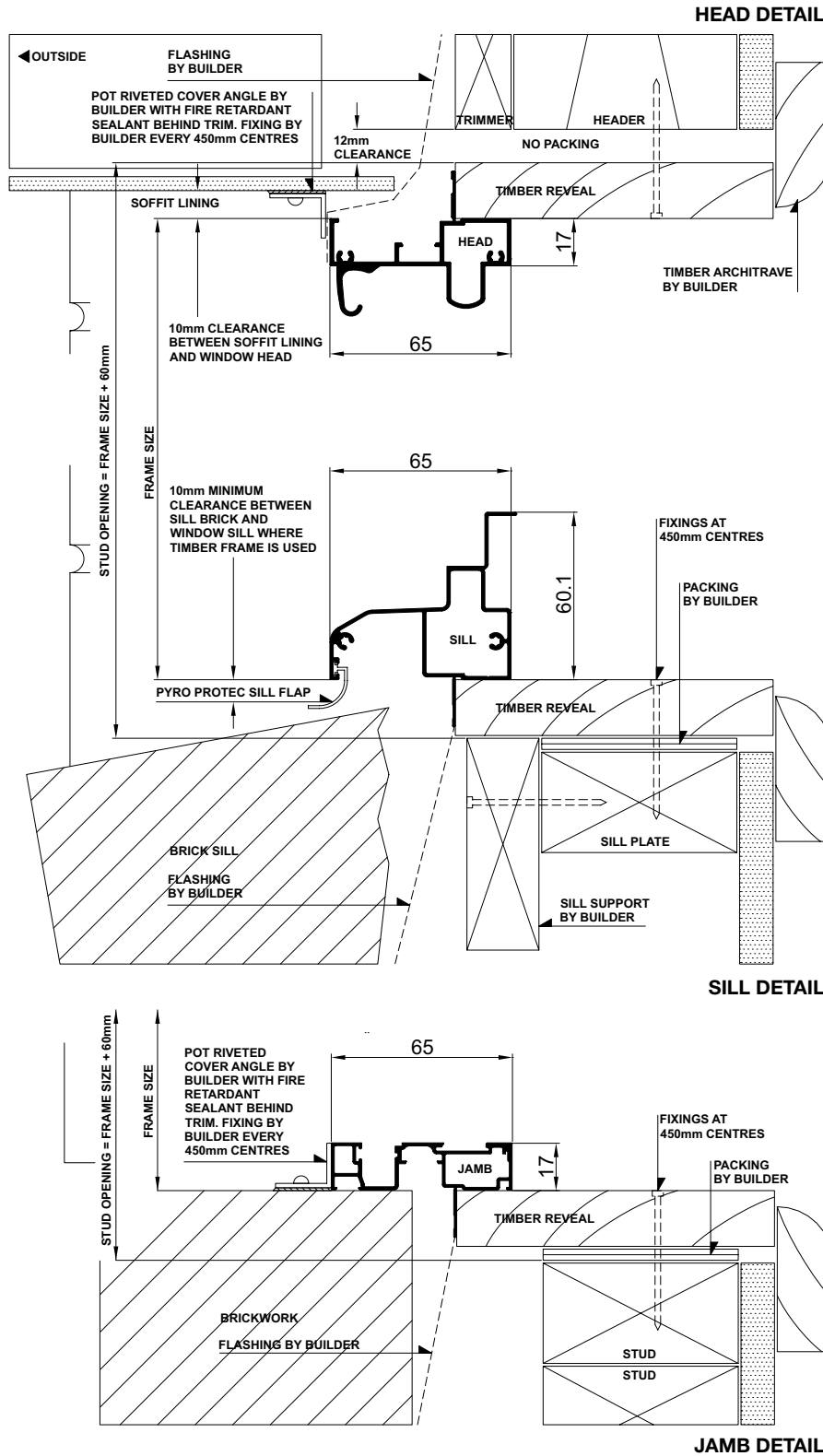
AA indicates Awning/Awning

AFA indicates Awning/Fixed/Awning

T after the size indicates a Transom

Installation

Xtreme® Awning Windows | Building In Detail | **Brick Veneer - 230mm wall**



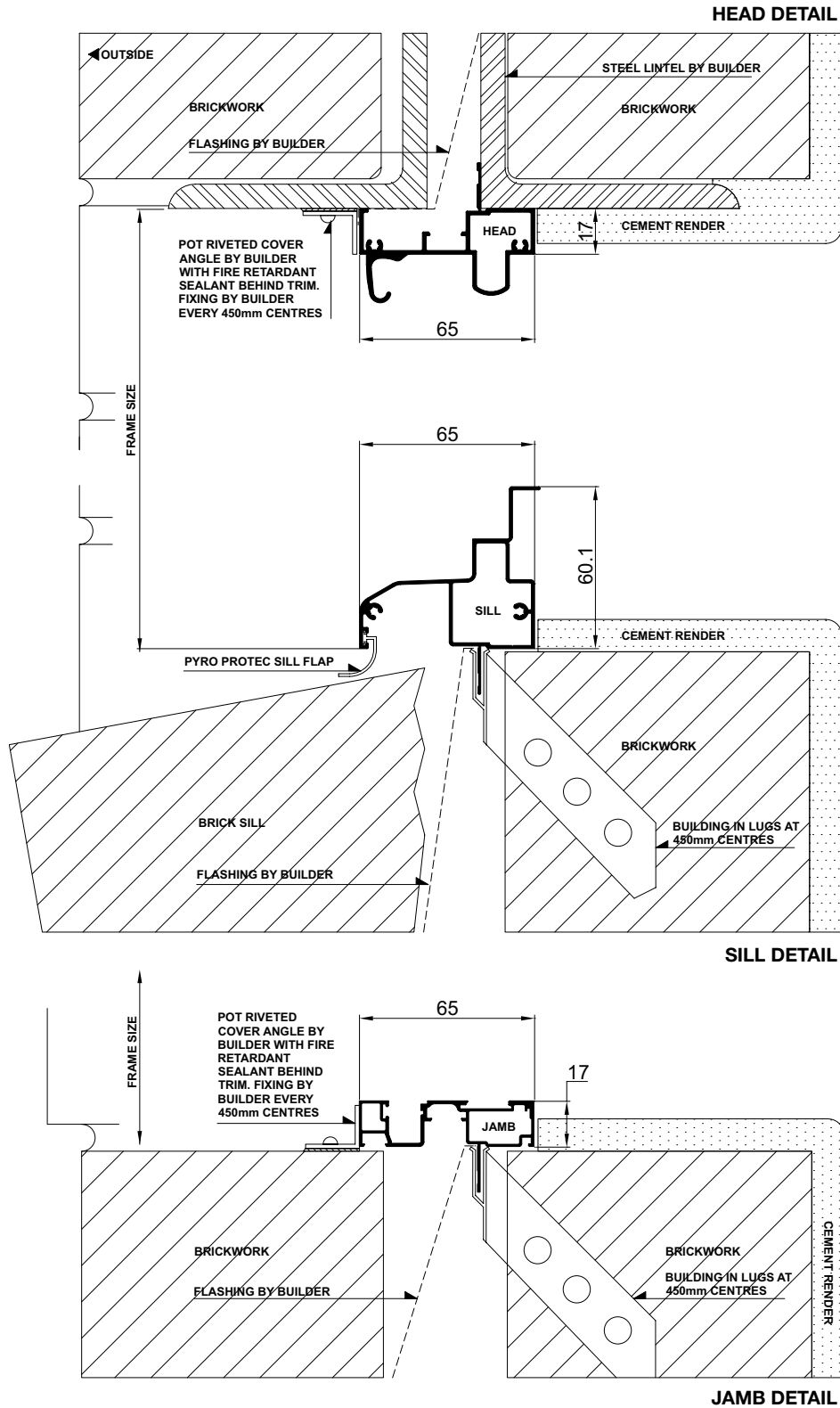
Please note that drawings are not to scale

Xtreme® Awning Windows | QPA-E | Mk-4 | 1 Jul 2009

Confidentiality Notice: This document and the information it contains are copyright and confidential to Trend® Windows & Doors Pty Limited. Disclosure, use and copying in any form whatsoever, except as authorised by Trend® Windows & Doors in writing, are strictly prohibited. Patents and Design Registrations pending.

Installation

Xtreme® Awning Windows | Building In Detail | **Double Brick - 280mm wall**



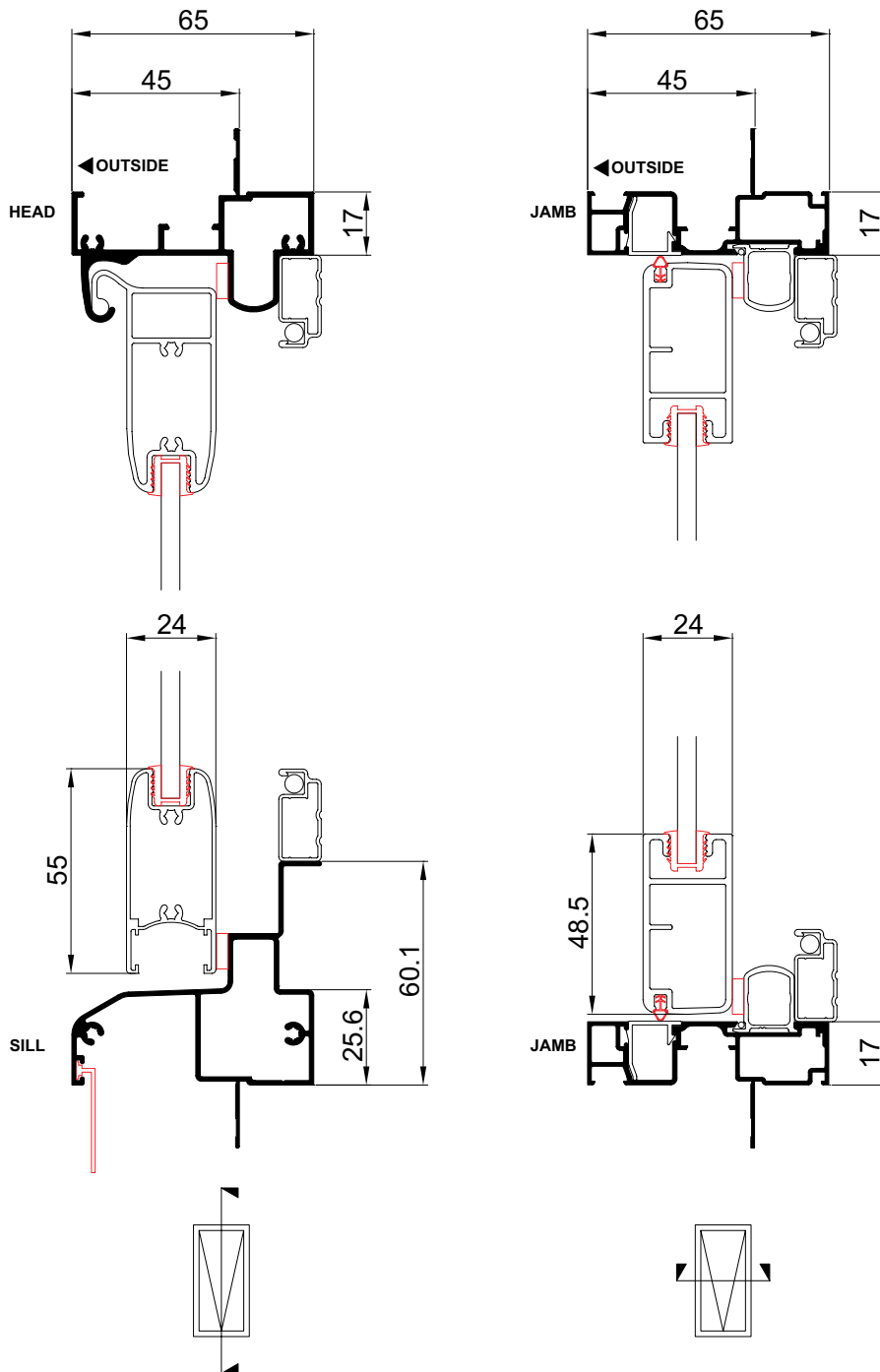
Please note that drawings are not to scale

Xtreme® Awning Windows | QPA-E | Mk-4 | 1 Jul 2009

Confidentiality Notice: This document and the information it contains are copyright and confidential to Trend® Windows & Doors Pty Limited. Disclosure, use and copying in any form whatsoever, except as authorised by Trend® Windows & Doors in writing, are strictly prohibited. Patents and Design Registrations pending.

Cross Sectional Views

Xtreme® Awning Windows | **Single Lite**



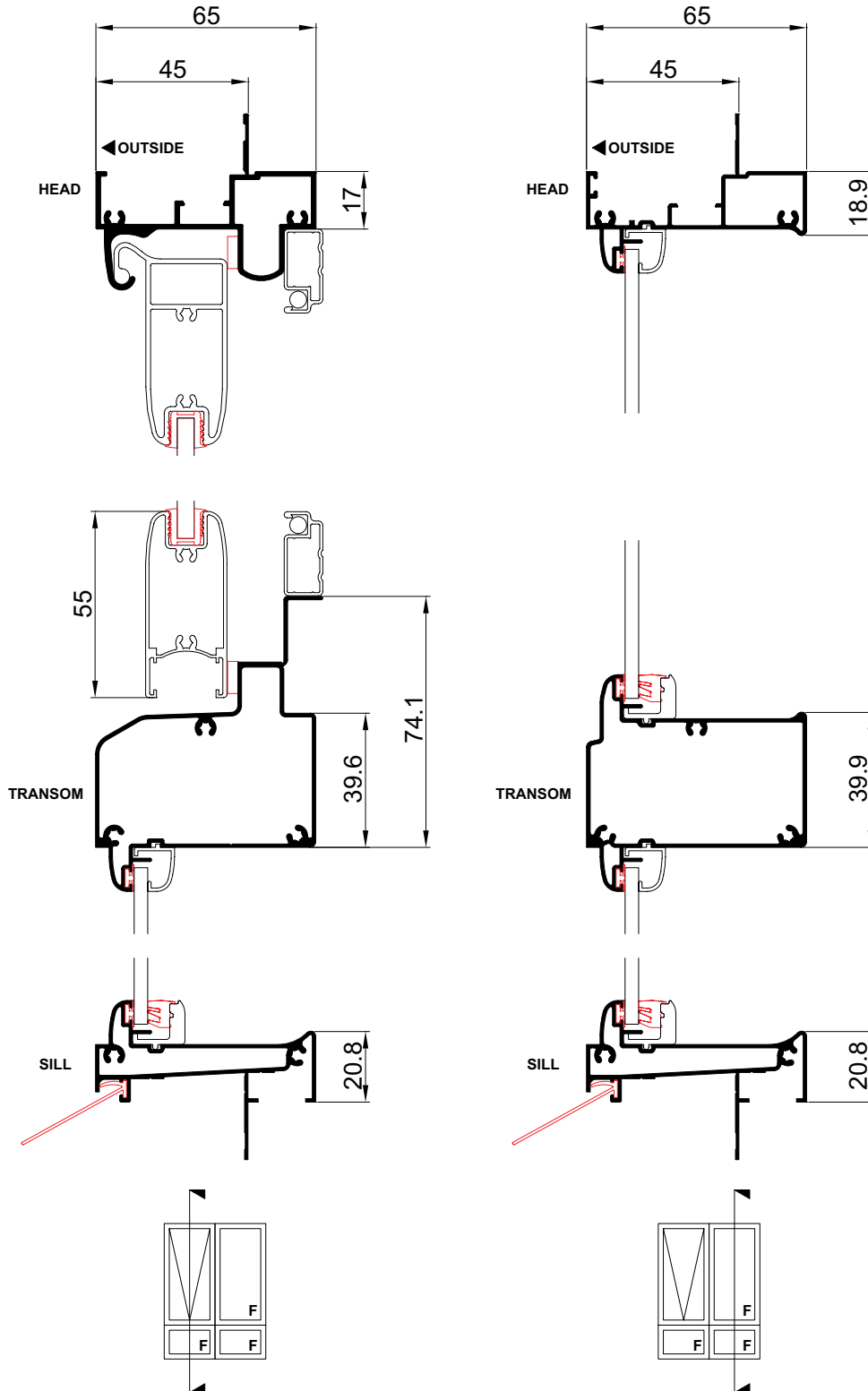
 Red outline indicates PYRO PROTEC seals

Please note that drawings are not to scale

Xtreme® Awning Windows | QPA-E | Mk-4 | 1 Jul 2009

Cross Sectional Views

Xtreme® Awning Windows | **Two Lite with Lowlite**



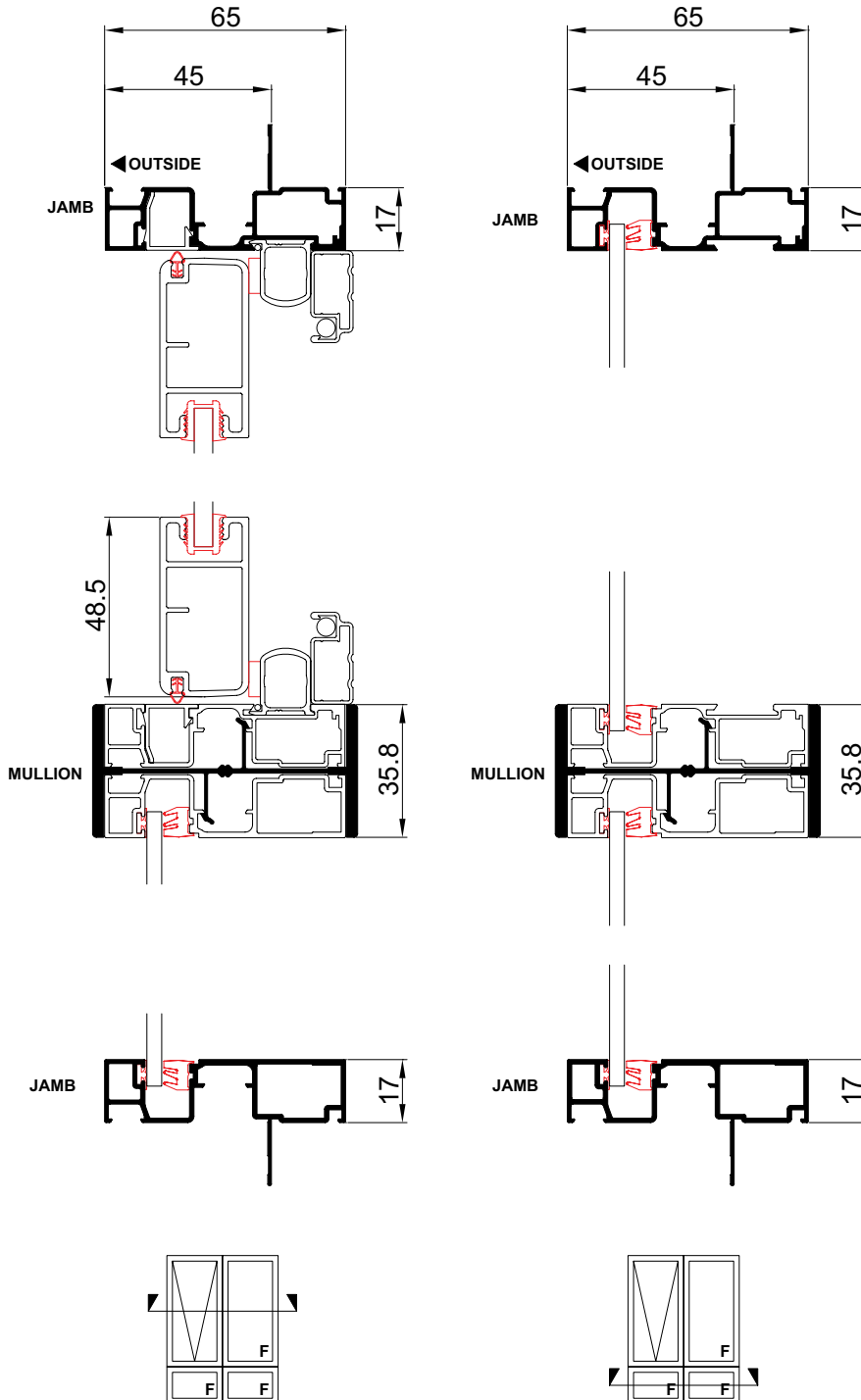
 Red outline indicates PYRO PROTEC seals

Please note that drawings are not to scale

Xtreme® Awning Windows | QPA-E | Mk-4 | 1 Jul 2009

Cross Sectional Views

Xtreme® Awning Windows | **Two Lite with Lowlite**



 Red outline indicates PYRO PROTEC seals

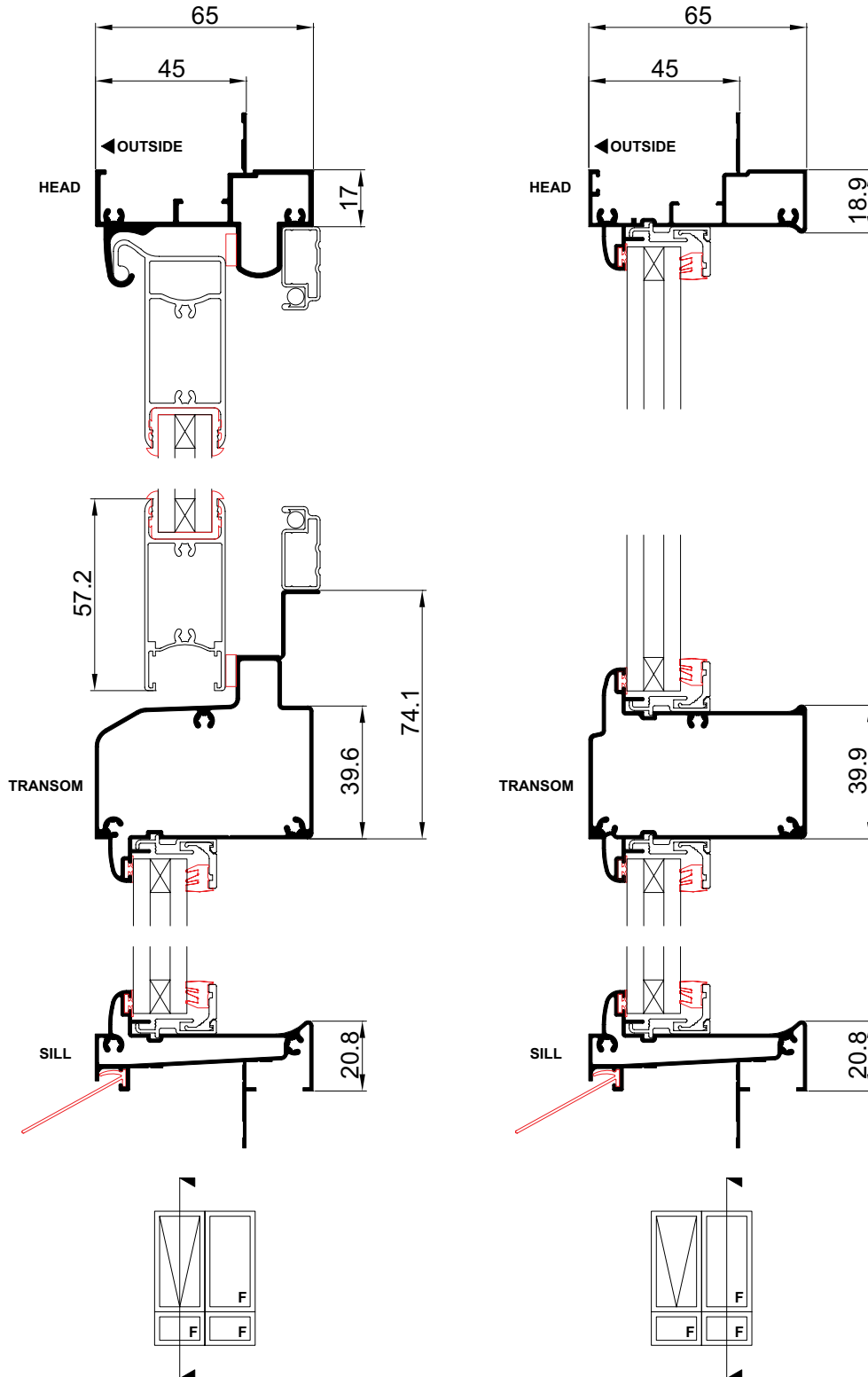
Please note that drawings are not to scale

Xtreme® Awning Windows | QPA-E | Mk-4 | 1 Jul 2009

Confidentiality Notice: This document and the information it contains are copyright and confidential to Trend® Windows & Doors Pty Limited. Disclosure, use and copying in any form whatsoever, except as authorised by Trend® Windows & Doors in writing, are strictly prohibited. Patents and Design Registrations pending.

Cross Sectional Views

Xtreme® Awning Windows | **Double Glazed**



 Red outline indicates PYRO PROTEC seals

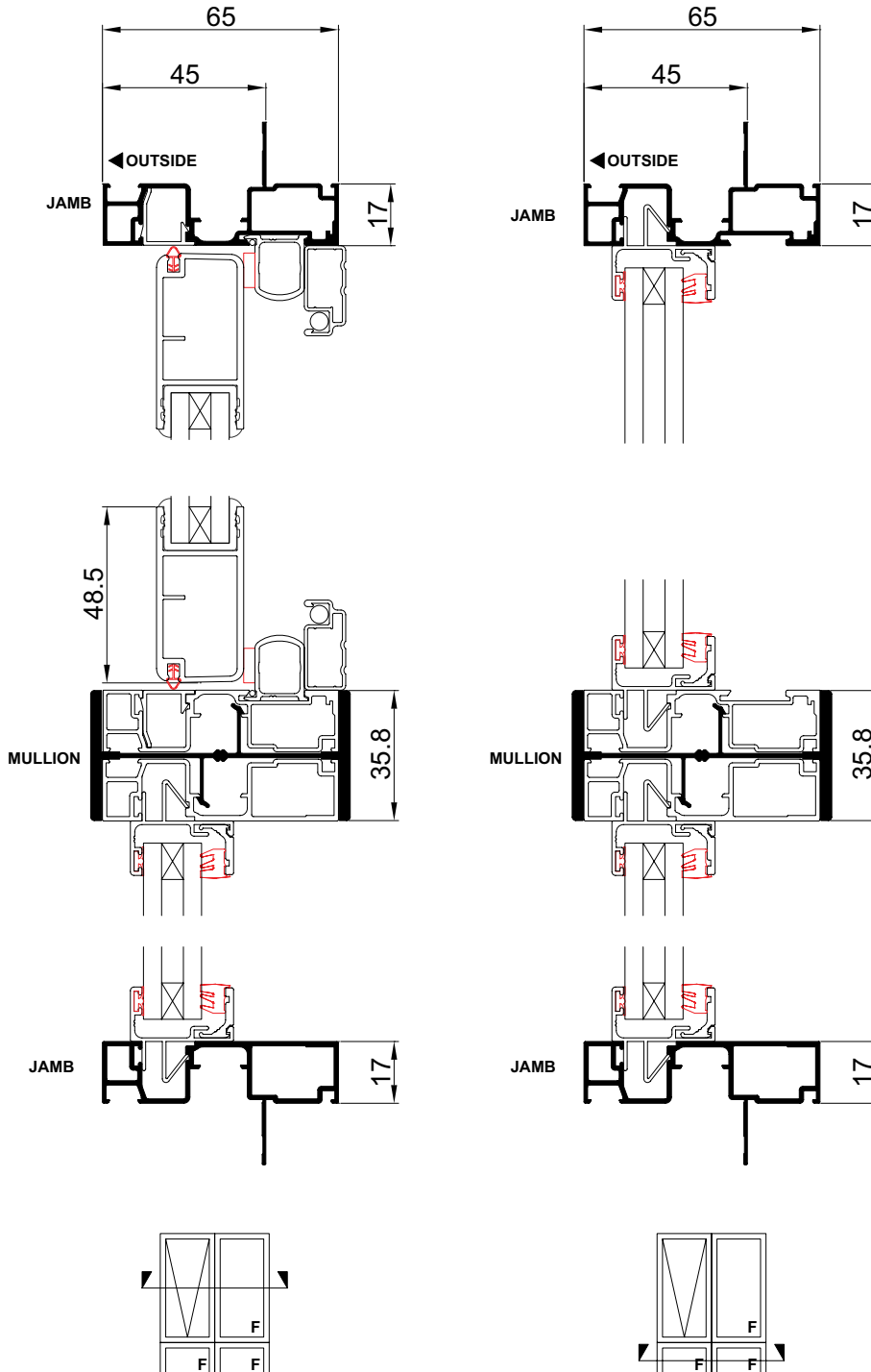
Please note that drawings are not to scale

Xtreme® Awning Windows | QPA-E | Mk-4 | 1 Jul 2009

Confidentiality Notice: This document and the information it contains are copyright and confidential to Trend® Windows & Doors Pty Limited. Disclosure, use and copying in any form whatsoever, except as authorised by Trend® Windows & Doors in writing, are strictly prohibited. Patents and Design Registrations pending.

Cross Sectional Views

Xtreme® Awning Windows | **Double Glazed**



 Red outline indicates PYRO PROTEC seals

Please note that drawings are not to scale

Xtreme® Awning Windows | QPA-E | Mk-4 | 1 Jul 2009